

NOTE: Changing SPAN is mainly for use with the raw taper. For saw and square tapers, the span is not changed, only the number of times the square/saw cycles between toe and heel (so instead of eight, it could be four). When setting extremely tight spans, it may be necessary to move the treadle a full span width before pressing the SET button.

INTERNAL CV SWITCH

Expressionator has an internal switch for each channel to send +5 CV for use with devices that call for it such as Moogerfoogers, etc.

WARNING: Sending control voltage to a pedal that does not require it can seriously damage your pedal! Do NOT flip this switch unless the device specifically calls for it.

MEMORY

When powering off Expressionator, your current active channel, ON status, current taper and span for each channel, is retained.

CLEARING MEMORY

To return Expressionator to factory default, hold the SET and STOMP down simultaneously for five seconds. When you see the three channel LEDs cycle, memory has been cleared.

WARRANTY & LIABILITY

We offer a one-year warranty on Expressionator. Contact info@missionengineering.com for more info. Due to the nature of this product, we do not take responsibility for damage to other products.

NOTE: Changing SPAN is mainly for use with the raw taper. For saw and square tapers, the span is not changed, only the number of times the square/saw cycles between toe and heel (so instead of eight, it could be four). When setting extremely tight spans, it may be necessary to move the treadle a full span width before pressing the SET button.

INTERNAL CV SWITCH

Expressionator has an internal switch for each channel to send +5 CV for use with devices that call for it such as Moogerfoogers, etc.

WARNING: Sending control voltage to a pedal that does not require it can seriously damage your pedal! Do NOT flip this switch unless the device specifically calls for it.

MEMORY

When powering off Expressionator, your current active channel, ON status, current taper and span for each channel, is retained.

CLEARING MEMORY

To return Expressionator to factory default, hold the SET and STOMP down simultaneously for five seconds. When you see the three channel LEDs cycle, memory has been cleared.

WARRANTY & LIABILITY

We offer a one-year warranty on Expressionator. Contact info@missionengineering.com for more info. Due to the nature of this product, we do not take responsibility for damage to other products.

Thank you for purchasing the Expressionator!



MISSION ENGINEERING INC.
www.missionengineering.com
info@missionengineering.com

©Mission Engineering Inc. 2015 All rights reserved. Trademarks, registered trademarks, product names, logos and other materials are the property of their respective owners.

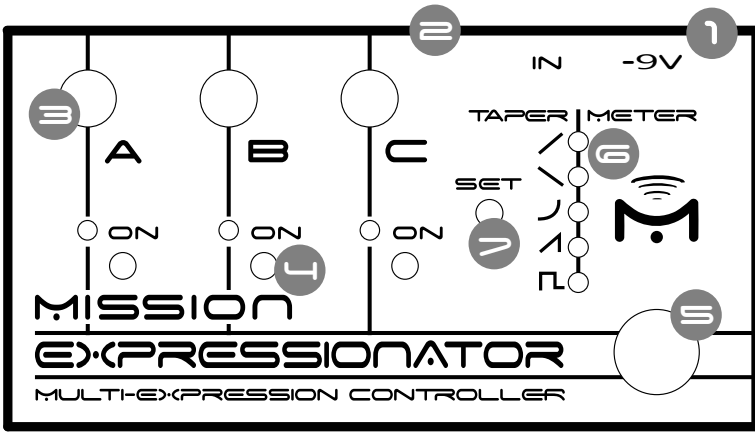
Thank you for purchasing the Expressionator!



MISSION ENGINEERING INC.
www.missionengineering.com
info@missionengineering.com

©Mission Engineering Inc. 2015. All rights reserved. Trademarks, registered trademarks, product names, logos and other materials are the property of their respective owners.

Expressionator



1 POWER

Expressionator uses the industry standard for power, a 5.5/2.1mm center negative 9volt jack. To avoid digital noise, power Expressionator with an isolated power supply such as Voodoo Labs Pedal Power+ or CIOKS DC-10. Power consumption ranges from 60-80mA.

2 CONNECTIONS

All connections are made using TRS plugs. A TRS cable is identified by two black lines on the plug. As a general pre-caution, have power OFF to both effects and Expressionator when making connections.

3 CHANNEL LED

This large LED designates the current active channel. Use the stomp to cycle channels. Your position is retained when you switch channels (if the ON button is unlit). Each channel is color-coded (green, yellow, red) and the meter will change color to signify the active channel.

4 ON BUTTON

Press the ON button to keep that channel transmitting treadle position, even when you are not on the active channel. You can have one, two or all three channels sending treadle position simultaneously.

5 STOMP

Use the stomp to cycle through channels (A, B, C, A, B, C, etc.)

6 TAPER/METER

These five LEDs serve two functions. When using the expression pedal, they will show treadle position (in relation to the selected taper). When pressing SET, the meter will change to a single LED signifying the taper for that active channel.

7 SET BUTTON

Use the set button for choosing a taper for the active channel and for setting low and high span width per channel.

TAPER SELECT

Press SET once and the meter will change from current treadle position to show what taper is currently selected. To change tapers, click SET two or more times. After a couple of seconds of non-use (or if you move the treadle) the display will change to show treadle position.

RAW - This taper replicates exactly what your expression treadle is sending. Heel position is zero lights, Toe position is all meter lights lit.

INVERSE - This taper flips the signal upside down. Toe is now zero lights and heel position is all lights lit.

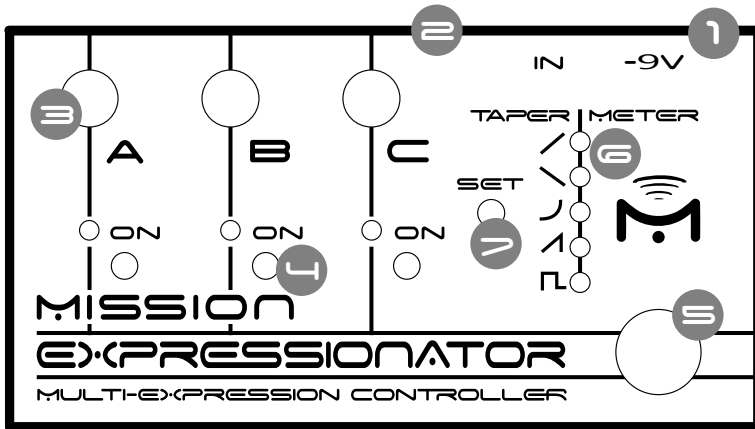
ANTI-LOG - Use this taper for volume pedals that have been modded with a TRS jack or plugged in using an "insert" cable. Evens out the steep cliff in logarithmic pots.

SAW - This taper mimics a saw wave by ramping from heel to toe eight times in the width of a single span. Great for filter and whammy-type effects.

SQUARE - This taper mimics a squarewave by deleting everything between full toe and full heel, creating an on/off effect. Like the saw taper, this happens eight times in the width of one span.

SETTING SPAN

1. Select the channel you want to change span width.
 2. Hold the SET button until the channel LED starts blinking slowly.
 3. Slow blink signifies LOW span. Move your treadle position to the desired lowest position. Press SET.
 4. Fast blink signifies HIGH span. Move your treadle to the highest desired position. Press SET.
- Expressionator will now save and the meter LEDs will be limited to the span you designated.



1 POWER

Expressionator uses the industry standard for power, a 5.5/2.1mm center negative 9volt jack. To avoid digital noise, power Expressionator with an isolated power supply such as Voodoo Labs Pedal Power+ or CIOKS DC-10. Power consumption ranges from 60-80mA.

2 CONNECTIONS

All connections are made using TRS plugs. A TRS cable is identified by two black lines on the plug. As a general pre-caution, have power OFF to both effects and Expressionator when making connections.

3 CHANNEL LED

This large LED designates the current active channel. Use the stomp to cycle channels. Your position is retained when you switch channels (if the ON button is unlit). Each channel is color-coded (green, yellow, red) and the meter will change color to signify the active channel.

4 ON BUTTON

Press the ON button to keep that channel transmitting treadle position, even when you are not on the active channel. You can have one, two or all three channels sending treadle position simultaneously.

5 STOMP

Use the stomp to cycle through channels (A, B, C, A, B, C, etc.)

6 TAPER/METER

These five LEDs serve two functions. When using the expression pedal, they will show treadle position (in relation to the selected taper). When pressing SET, the meter will change to a single LED signifying the taper for that active channel.

7 SET BUTTON

Use the set button for choosing a taper for the active channel and for setting low and high span width per channel.

TAPER SELECT

Press SET once and the meter will change from current treadle position to show what taper is currently selected. To change tapers, click SET two or more times. After a couple of seconds of non-use (or if you move the treadle) the display will change to show treadle position.

RAW - This taper replicates exactly what your expression treadle is sending. Heel position is zero lights, Toe position is all meter lights lit.

INVERSE - This taper flips the signal upside down. Toe is now zero lights and heel position is all lights lit.

ANTI-LOG - Use this taper for volume pedals that have been modded with a TRS jack or plugged in using an "insert" cable. Evens out the steep cliff in logarithmic pots.

SAW - This taper mimics a saw wave by ramping from heel to toe eight times in the width of a single span. Great for filter and whammy-type effects.

SQUARE - This taper mimics a squarewave by deleting everything between full toe and full heel, creating an on/off effect. Like the saw taper, this happens eight times in the width of one span.

SETTING SPAN

1. Select the channel you want to change span width.
 2. Hold the SET button until the channel LED starts blinking slowly.
 3. Slow blink signifies LOW span. Move your treadle position to the desired lowest position. Press SET.
 4. Fast blink signifies HIGH span. Move your treadle to the highest desired position. Press SET.
- Expressionator will now save and the meter LEDs will be limited to the span you designated.